

SOUTH SUDAN

EAST AFRICA CHILDREN'S CRISIS SITUATION REPORT | JUNE 1 - JUNE 30, 2019

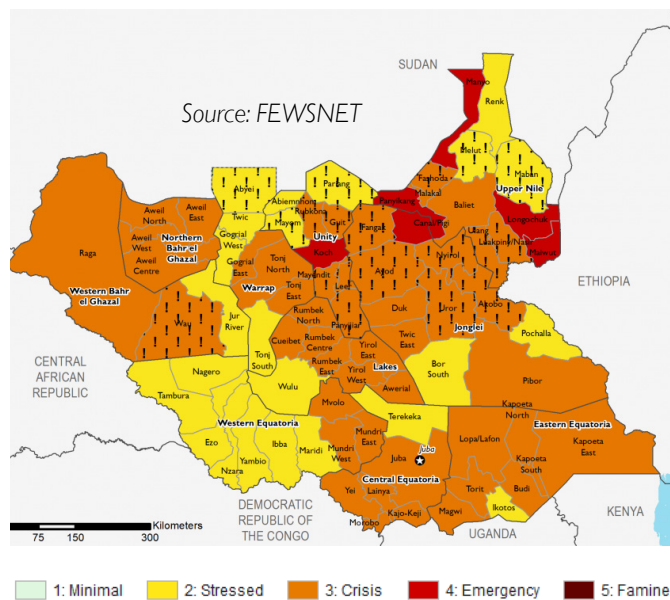


Key messages

- Food Insecurity:** In May-July 2019, an estimated 6.96 million people (61% of the population) are likely to face Crisis (IPC Phase 3) acute food insecurity or worse, out of which an estimated 1.82 million people will face Emergency (IPC Phase 4) acute food insecurity and 21,000 will likely be in Catastrophe (IPC phase 5). This is historically the highest number of people in South Sudan ever to face Crisis (IPC Phase 3) acute food insecurity or worse.
- UNMISS "Protection of Civilians" (PoC) Sites As of 6 June 2019, a total of number of civilians seeking safety in six Protection of Civilians (PoC) sites located on UNMISS bases is 181,096 including 100,441 in Bentiu, 29,190 in Malakal, 30,272 in Juba UN House, 2,061 in Bor, and 19,132 in the area adjacent to UNMISS in Wau. (FEWSNET)
- Preparedness:** Following the outbreak of the Ebola Virus Disease (EVD) in the North Kivu Province of the neighbouring Democratic Republic of Congo at the beginning of August 2018, there is an increased threat of cross-border spread into South Sudan. To prevent the potential spread and ensure readiness for any eventualities, a preparedness and response plan has been activated in the Western Equatoria zone led by World Vision and in partnership with the Ministry of Health, World Health Organisation and other partner agencies .
- Resilience and Sustainability:** Years of conflict, displacement and underdevelopment have limited people's livelihood opportunities, marginalized women's formal employment opportunities, and weakened families' ability to cope with the protracted crisis and sudden shocks, like the death of a wage earner or loss of cattle (South Sudan HNO, 2019). To address the long-term needs of the population in-need, World Vision's programs build the capacity and skills of people to support themselves. Trainings on livelihoods, vocational and business skills, proper nutrition, health and sanitation among others are being conducted to encourage resilience and sustainability.

Food Security Outlook

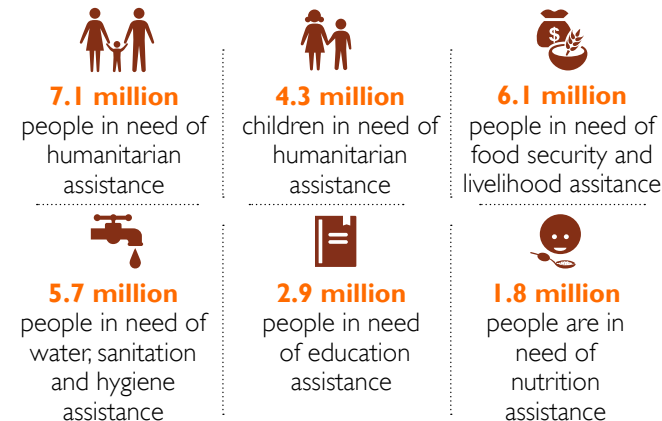
October 2019 - January 2020



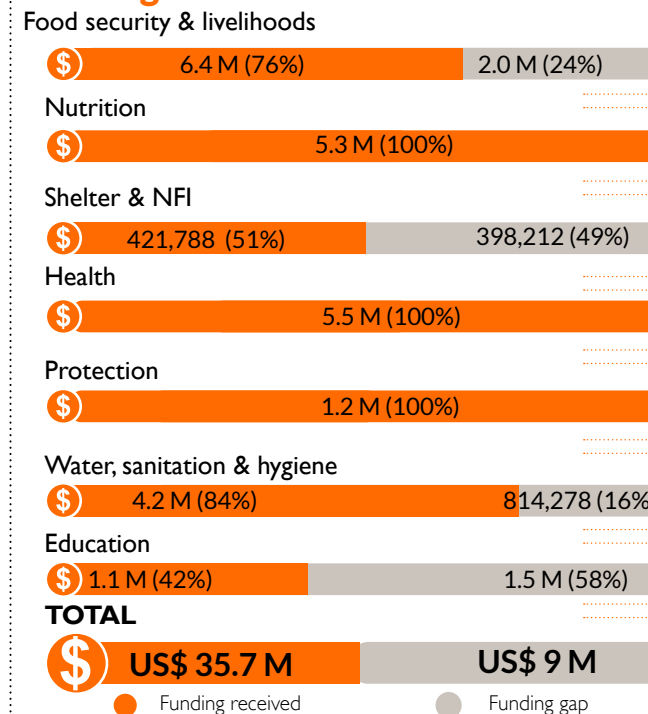
Gaps and needs

- People in need of humanitarian assistance:** The humanitarian crisis in South Sudan is complex, with a combination of factors increasing the vulnerabilities of a majority of the population. An estimated 6.45 million people, (more than half the country's population) continue to face acute food insecurity and hence humanitarian support particularly in the form of emergency food assistance is necessary in averting the risk of starvation or worse famine.
- Acute hunger still affecting over 100 million people worldwide. Two-thirds of the people facing crisis food insecurity globally come from eight countries, among these is South Sudan.

Humanitarian needs



Funding needs



*All financial figures in US\$.

The boundaries and names shown and the designations used on these maps do not imply official endorsement or acceptance by the World Vision International

Creation date: 29 July 2019

Sources: UNOCHA, WFP, UNOPS, IPC, FEWS.NET

Response highlights



FOOD SECURITY & LIVELIHOODS

- **Skills building:** 17,892 people learnt about improved farming practices, vegetable production, handling and marketing across food security and livelihood interventions in Western Equatoria, Juba, Upper Nile and Greater Bahr el Ghazal zones.
- **Livelihoods supplies/inputs:** 18,972 people received various tools and kits ranging from vegetables kits and tools.



HEALTH

- **Curative consultations and screening:** Over 69,083 people in Upper Nile, Warrap and Western Equatoria people accessed free curative consultations through government health facilities supported by World Vision. 61,540 people were screened for Ebola Virus disease and over 71,775 learnt about EVD risk reduction messages through static and community outreaches



WATER, SANITATION & HYGIENE

- **Potable water:** 195,485 people in Upper Nile received an average of 15.8 liters of clean safe water per person per day through World Vision supported water supply systems.



PROTECTION

- **Child Friendly Spaces:** 38,156 children living in Greater Bahr el Ghazal, Juba and Greater Upper Nile attended World Vision child friendly spaces where they accessed learning, participated in recreational activities and received psychosocial and protection support services.
- **Gender sensitive/inclusive programming:** 12,279 girls and women living across Upper Nile communities received dignity kits under gender sensitive and inclusive programming.



EDUCATION

- **Access, enrolment and retention:** 105,279 children attended World Vision supported primary schools, in Juba, Upper Nile, Western Equatoria and Warrap.
- **Mine risk reduction:** 12,114 children and adults in Juba, Western Equatoria and Upper Nile received mine risk awareness messages and skills.
- **School meals:** 101,567 school children attending 143 schools across Western Equatoria, Upper Nile and Warrap and NBG received a daily meal aimed at promoting attendance, retention and completion.



NUTRITION

- **Nutrition screening and treatment:** 168,394 children, pregnant and lactating mothers across Juba, Western Equatoria, Upper Nile, and Warrap were screened for malnutrition. 11,634 identified as malnourished were enrolled for care and treatment into World Vision supported nutrition health facilities for care and treatment.
- **Behavioural change messaging:** 64,889 caregivers learnt about maternal infant and young child nutrition appropriate hygiene practices, health seeking behaviors and appropriate nutrition through community awareness sessions and breast feeding corners at World Vision supported health and nutrition facilities in Upper Nile, Twic, Gogrial West and East, and Tonj North.

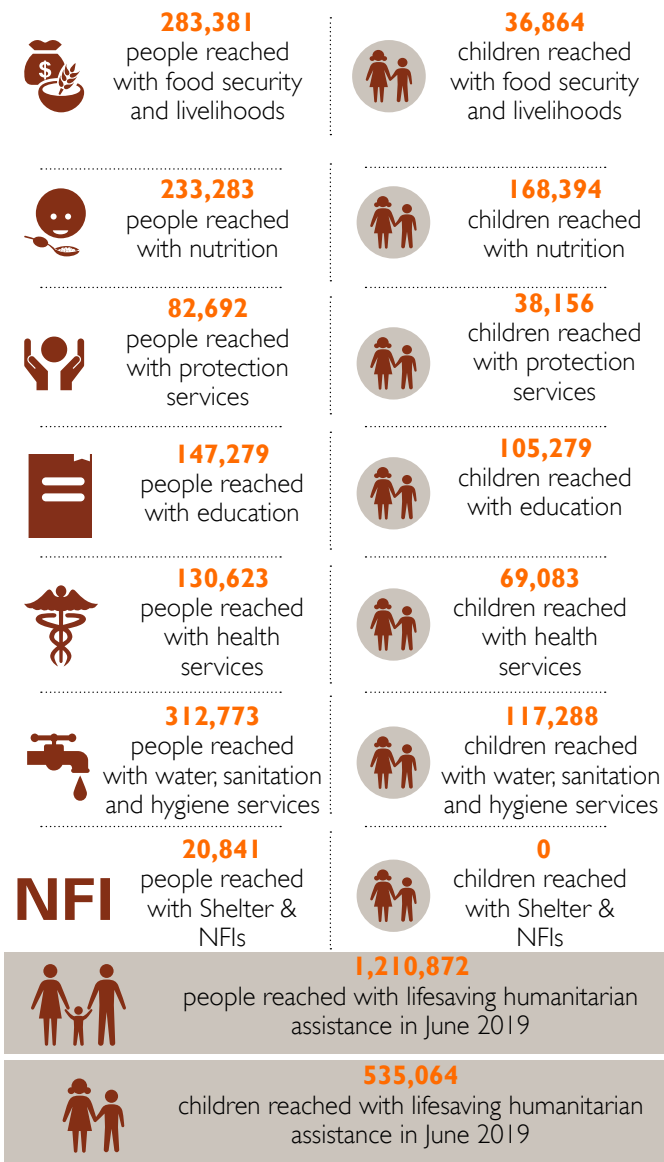


NFI SHELTER & NFIs

- **NFI supplies:** 20,841 internally displaced returnees at Nagero, Ulang, Bentiu, Tonga and Malakal received Shelter/NFIs kits containing plastic sheets, kitchen sets, collapsible jerry cans, Mosquito nets, sleeping mats, hygiene kits and soap in Upper Nile and Western Equatoria.

Response achievements

Reporting period June 01 - June 30, 2019

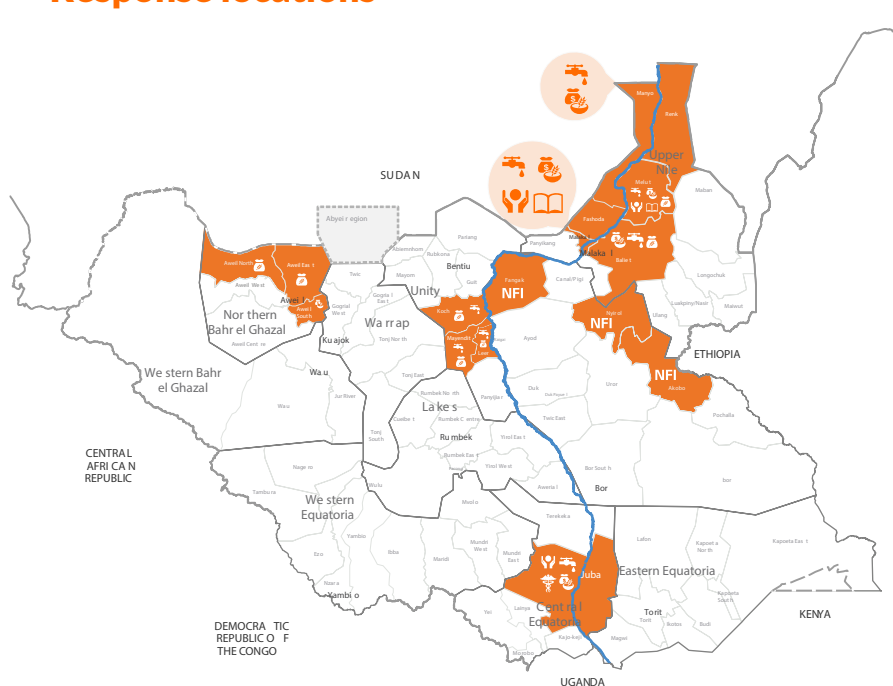


SOUTH SUDAN

EAST AFRICA CHILDREN'S CRISIS SITUATION REPORT | JUNE 1 - JUNE 30, 2019

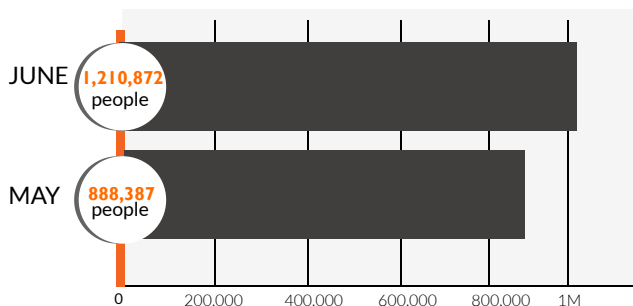


Response locations

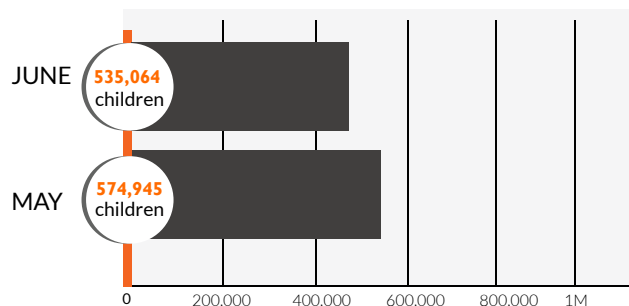


- Response locations
- WASH
- Health
- Food security & livelihoods
- Protection & Education
- Food assistance
- Nutrition
- Shelter & NFIs

Monthly achievements



Number of People reached



Number of Children reached

Primary contact information

Mesfin Loha
Country Program Director
Mesfin_Loha@wvi.org
Skype: mesloha

Gift Sibanda
Interim Operations Director
Gift_Sibanda@wvi.org
Skype: giftsibbs

Martin Omoro
Programmer Quality & Strategy Manager
Martin_Omoro@wvi.org
Skype: martinomoro

National office donors & partners



Global Affairs
Canada

Affaires mondiales
Canada



Empowered lives.
Resilient nations.



NEW ZEALAND
FOREIGN AFFAIRS & TRADE
Aid Programme



Food and Agriculture Organization
of the United Nations



Irish Aid
Government of Ireland



Department for
International
Development



USAID
FROM THE AMERICAN PEOPLE



UNHCR
The UN Refugee Agency



Government of the Netherlands



WFP
World Food Programme
wfp.org



Australian Government
Department of Foreign Affairs and Trade

The boundaries and names shown and the designations used on these maps do not imply official endorsement or acceptance by the World Vision International

Creation date: 29 July 2019

Sources: UNOCHA, WFP, UNOPS, IPC, FEWS.NET