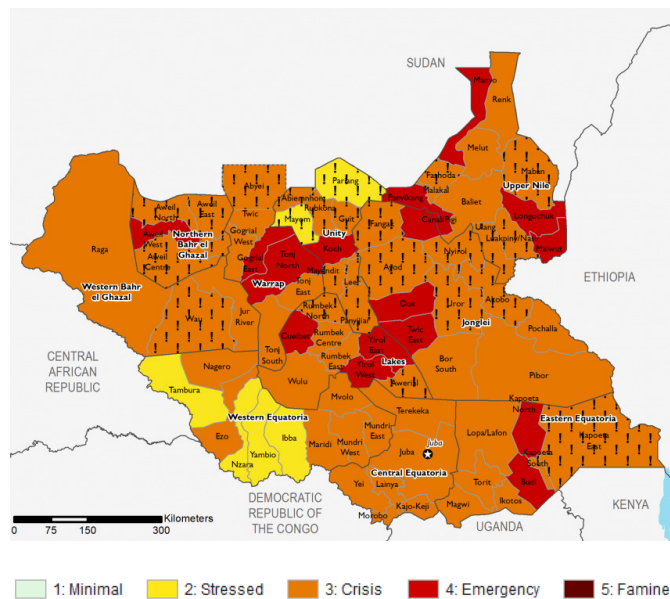


### Key messages

- Food Insecurity:** Conflict in first quarter of 2019 was relatively low compared to the same time period of each year between 2014 and 2018. This has supported slight improvements in food access; however, extreme levels of acute food insecurity persist given large-scale losses of household assets and disruption to typical livelihoods in past years. Crisis (IPC Phase 3) and Emergency (IPC Phase 4) outcomes exist across most of the country. Counties of greatest concern include Panyikang of Upper Nile, Cueibet of Lakes, and Canal/Pigi and Pibor of Jonglei where Catastrophe (IPC Phase 5) outcomes are likely. (FEWSNET)
- Preparedness:** Following the outbreak of the Ebola Virus Disease (EVD) in the North Kivu Province of the neighbouring Democratic Republic of Congo at the beginning of August 2018, there is an increased threat of cross-border spread into South Sudan. To prevent the potential spread and ensure readiness for any eventualities, a preparedness and response plan has been activated in the Western Equatoria zone led by World Vision and in partnership with the Ministry of Health, World Health Organisation and other partner agencies.
- Resilience and Sustainability:** Years of conflict, displacement and underdevelopment have limited people's livelihood opportunities, marginalized women's formal employment opportunities, and weakened families' ability to cope with the protracted crisis and sudden shocks, like the death of a wage earner or loss of cattle (South Sudan HNO, 2019). To address the long-term needs of the population in-need, World Vision's programs build the capacity and skills of people to support themselves. Trainings on livelihoods, vocational and business skills, proper nutrition, health and sanitation among others are being conducted to encourage resilience and sustainability. This month, over 500 farmers in Northern Bahr El Gazal learned about improved farming techniques and were provided with seeds and farm tools. This ongoing livelihoods capacity building is being implemented across World Vision's operational areas.

### Food Security Outlook

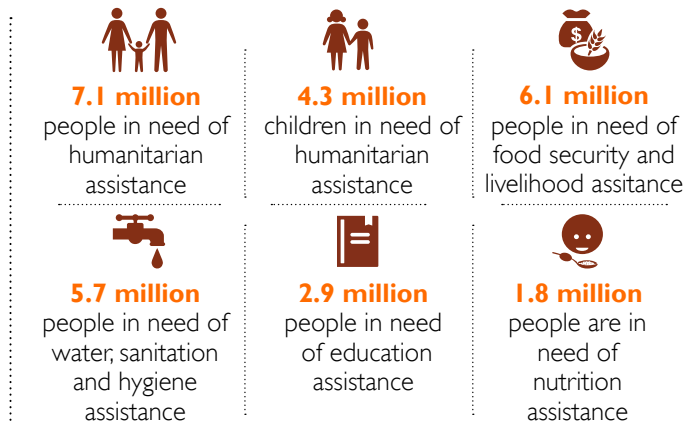
June - September 2019



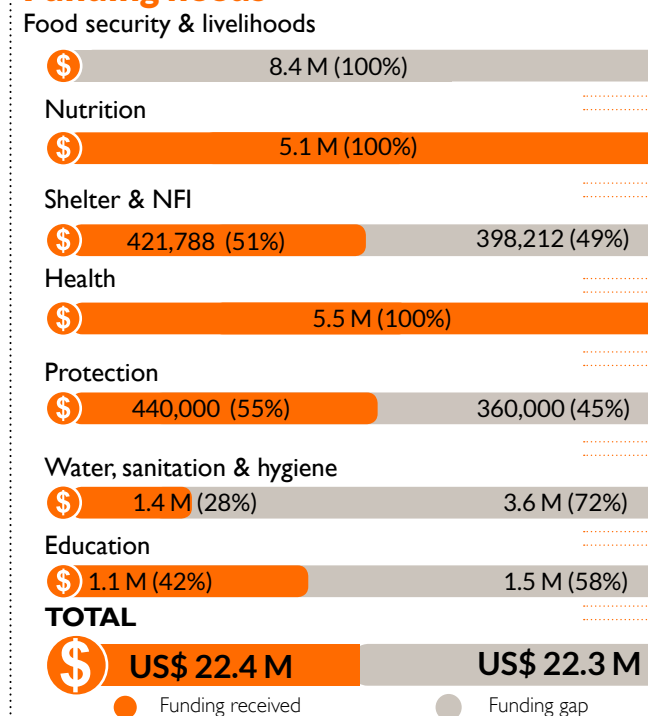
### Gaps and needs

- People in need of humanitarian assistance:** The humanitarian crisis in South Sudan is complex, with a combination of factors increasing the vulnerabilities of a majority of the population. An estimated 6.45 million people, (more than half the country's population) continue to face acute food insecurity and hence humanitarian support particularly in the form of emergency food assistance is necessary in averting the risk of starvation or worse famine.
- Acute hunger still affecting over 100 million people worldwide. Two-thirds of the people facing crisis food insecurity globally come from eight countries, among these is South Sudan.

### Humanitarian needs



### Funding needs



\*All financial figures in US\$.

The boundaries and names shown and the designations used on these maps do not imply official endorsement or acceptance by the World Vision International

### Response highlights



#### FOOD SECURITY & LIVELIHOODS

- **Food and cash assistance:** 246,517 people received food assistance through general food distribution, school feeding, blanket and targeted supplementary feeding programmes where they received 1 858.003 metric tons of assorted food commodities- sorghum, maize, beans, peas, lentils, vegetable oils, salt, CSB++ and plumpy-sup. 134,720 people received 1.3\$ million USD under cash and voucher programming.



#### HEALTH

- **Curative consultations and screening:** Over 87,000 people in Upper Nile, Warrap and Western Equatoria people accessed free curative consultations through government health facilities supported by World Vision. 61,540 people were screened for Ebola Virus disease and over 71,775 learnt about EVD risk reduction messages through static and community outreaches.



#### WATER, SANITATION & HYGIENE

- **Potable water:** 195,480 people in Upper Nile received an average of 15.8 liters of clean safe water per person per day through World Vision supported water supply systems.



#### PROTECTION

- **Child Friendly Spaces:** 19,772 children living in Greater Bahr el Ghazal, Juba and Greater Upper Nile attended World Vision child friendly spaces where they accessed learning, participated in recreational activities and received psychosocial and protection support services.
- **Behavioural change messaging:** 19,981 children learnt about child rights, legal services, and sexual and gender based violence while accessing psychosocial support across World Vision supported communities.



#### EDUCATION

- **Access, enrolment and retention:** 114,287 children attended World Vision supported primary schools, in Juba, Upper Nile and Warrap.
- **School supplies:** Continuous efforts to enhance quality of learning and teaching enhanced through supply of learning materials- 958 teaching guides, 4,639 assorted pupils' text books; 10,831 exercise books; 1,875 pens, and 660 mathematics sets.
- **School meals:** 63,560 school children attending 143 schools across Upper Nile and Warrap and NBG received a daily meal aimed at promoting attendance, retention and completion.



#### NUTRITION

- **Nutrition screening and treatment:** 59,067 children, pregnant and lactating mothers across Juba, Western Equatoria, Upper Nile, and Warrap were screened for malnutrition. 18,923 identified as malnourished were enrolled for care and treatment into World Vision supported nutrition health facilities for care and treatment.
- **Behavioural change messaging:** 21,998 caregivers learnt about maternal infant and young child nutrition, appropriate hygiene practices, health seeking behaviors and appropriate nutrition through community awareness sessions and breast feeding corners at World Vision supported health and nutrition facilities in Upper Nile, Twic, Gogrial West and East, and Tonj North.

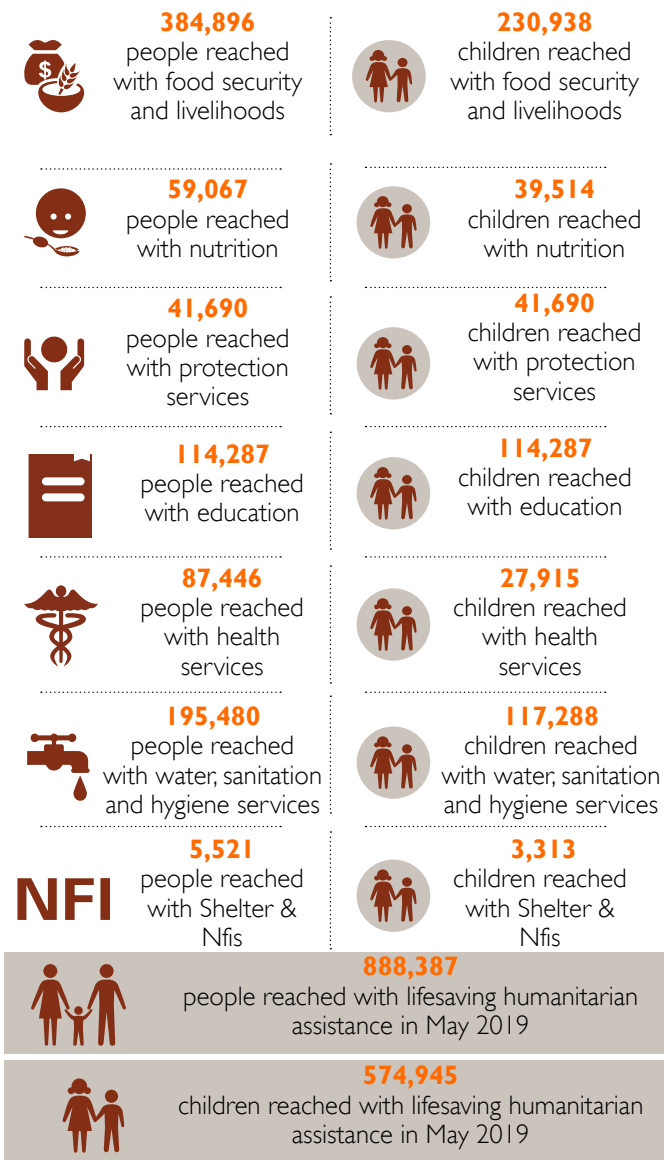


#### NFI SHELTER & NFIs

- **NFI supplies:** 5,521 internally displaced returnees at Nagero received Shelter/NFIs kits containing plastic sheets, kitchen sets, collapsible jerry canes, Mosquito nets and sleeping mats.

### Response achievements

Reporting period May 01 - May 31, 2019

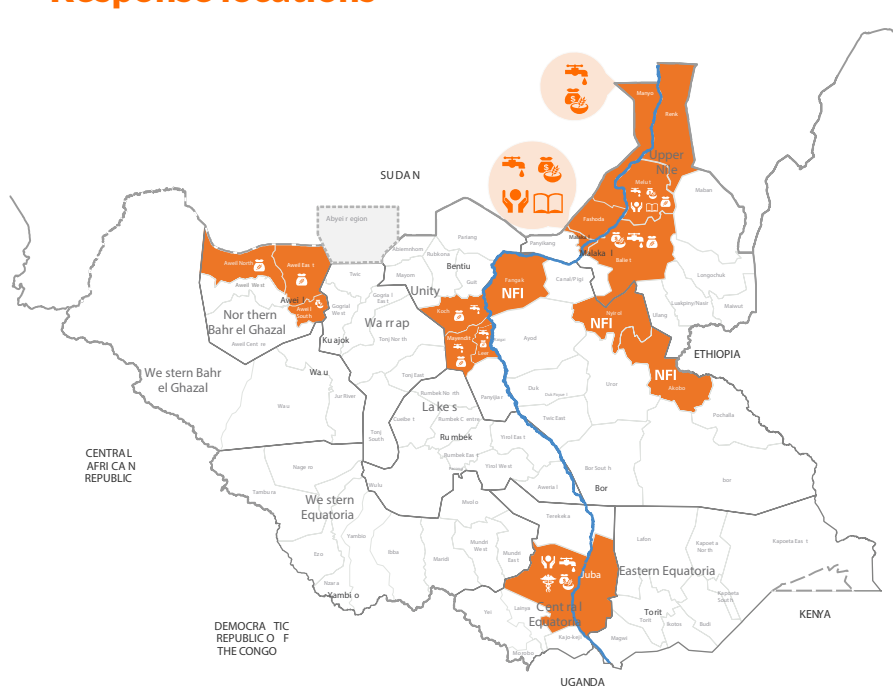


# SOUTH SUDAN

EAST AFRICA CHILDREN'S CRISIS SITUATION REPORT | MAY 1 - MAY 31, 2019

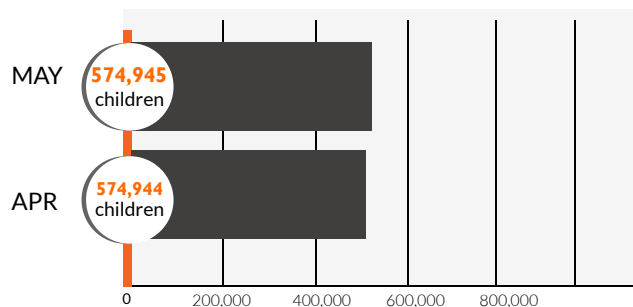
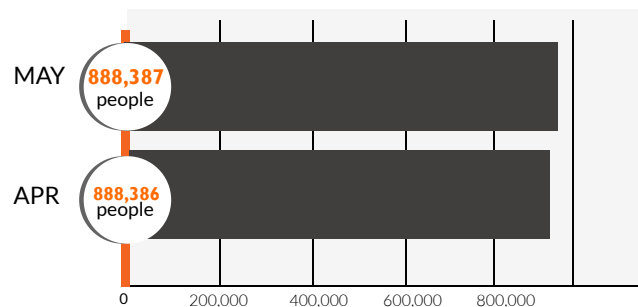


## Response locations



- Response locations
- WASH
- Health
- Food security & livelihoods
- Protection & Education
- Food assistance
- Nutrition
- Shelter & NFIs

## Monthly achievements



Number of People reached

Number of Children reached

## Primary contact information

**Mesfin Loha**  
Country Program Director  
Mesfin\_Loha@wvi.org  
Skype: mesloha

**Gift Sibanda**  
Interim Operations Director  
Gift\_Sibanda@wvi.org  
Skype: giftsibbs

**Martin Omoro**  
Acting Quality Assurance Manager  
Martin\_Omoro@wvi.org  
Skype: martinomoro

## National office donors & partners



Global Affairs Canada

Affaires mondiales Canada



Empowered lives. Resilient nations.



NEW ZEALAND FOREIGN AFFAIRS & TRADE Aid Programme



Food and Agriculture Organization of the United Nations



Government of Ireland



Department for International Development



Government of the Netherlands



World Food Programme



Australian Government Department of Foreign Affairs and Trade

The boundaries and names shown and the designations used on these maps do not imply official endorsement or acceptance by the World Vision International

Creation date: 21 June 2019

Sources: UNOCHA, WFP, UNOPS, IPC, FEWS.NET