

Utilizing Research to Build Preventive Programming

World Vision in
Lebanon

The education figures for the refugee populations in Lebanon are more concerning, as **more than 50 percent** of Syrian refugee children were reported as **not enrolled in formal education**.

Recent data available for the refugee population highlighted that the number of children aged between 5 to 17 years who are engaged in child labour almost **doubled**

since 2019, reaching **4.4%** in 2020.

*The US Department of Labour, UNICEF

——— 2019 –
2020

Research aim and objectives

The aim of this study is to **explore** figures around child activity options (school enrolment and child labour including household chores) and their determinants for children aged **3 to 18 years** old in Lebanon, with **a focus on the most vulnerable**.

Additionally, the study sought to **determine the perceptions of child education and labour** among parents of school-children.

Methodology

Study design & population

- **Study Design:** The study was a cross-sectional observational survey of parents (both Syrian and Lebanese) of school-aged children in Lebanon.
- **Study Population and Setting:** The target population for the study included caregivers of school-aged children (3 to 18 years old) among the most vulnerable residing in different areas in Lebanon.
 - The total required sample size was 769
 - Respondents targeted were equally split between males and females.

Mentimeter

Question: What do you think are the determinants or drivers of child labour on a household level? (open ended question)

Findings

Inferential: School Enrolment



The economic
situation:
the prime motive behind
withdrawals from school



Reasons for withdrawing children from school

75% Unable to pay school fees and expenses



The risks

- . Falling into child labour
- . No form of meaningful activity
- . No skills to build a future

Findings

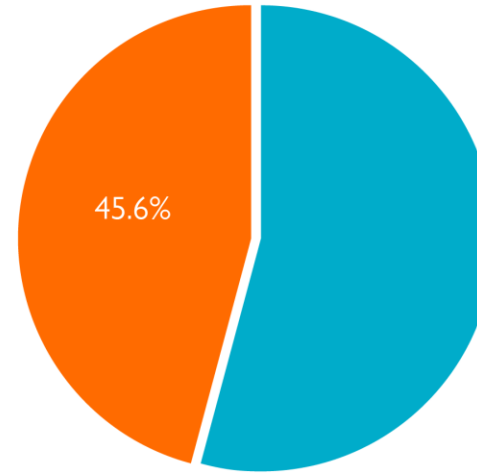
Inferential: Child Labour

5.4%

of households with children **3 to 11** years old reported having at least one child involved in child labour.



World Vision
الرؤية العالمية



In these households where at least one child works, almost half (**45.6%**) of the children are involved in **child labour.**

Findings

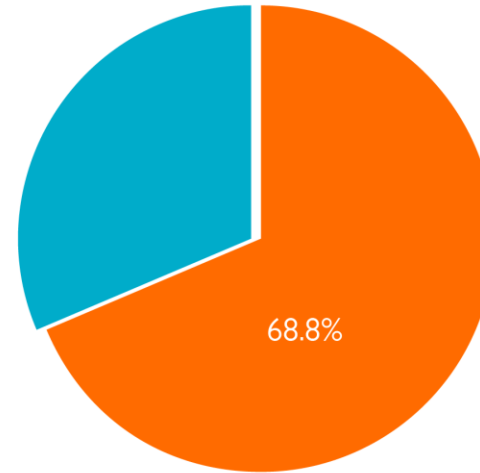
Inferential: Child Labour

12.7%

of households with children **12 to 18** years old reported having at least one child involved in child labour.



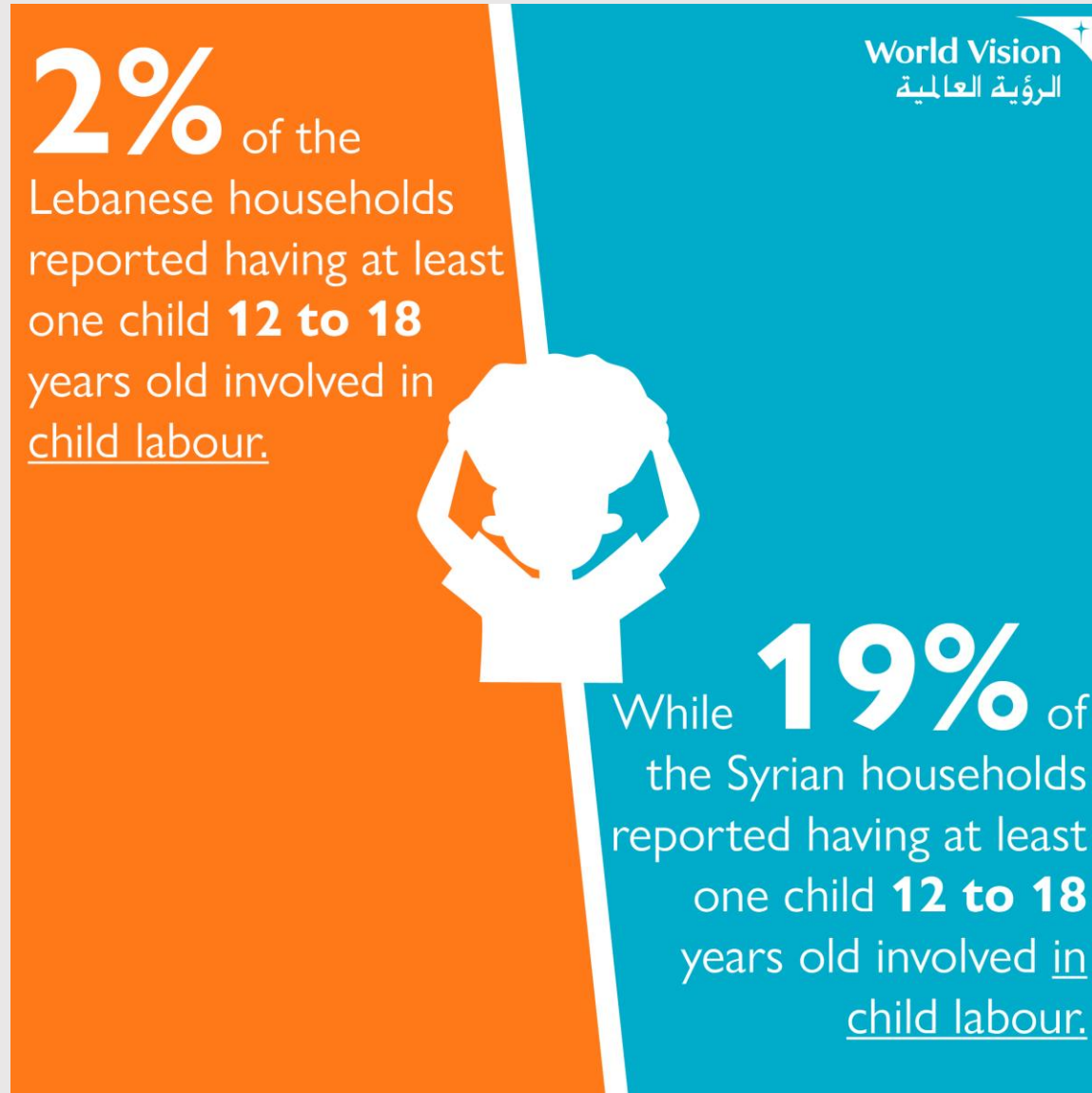
World Vision
الرؤية العالمية



In these households where at least one child works, **68.8%** of the children are involved in **child labour.**

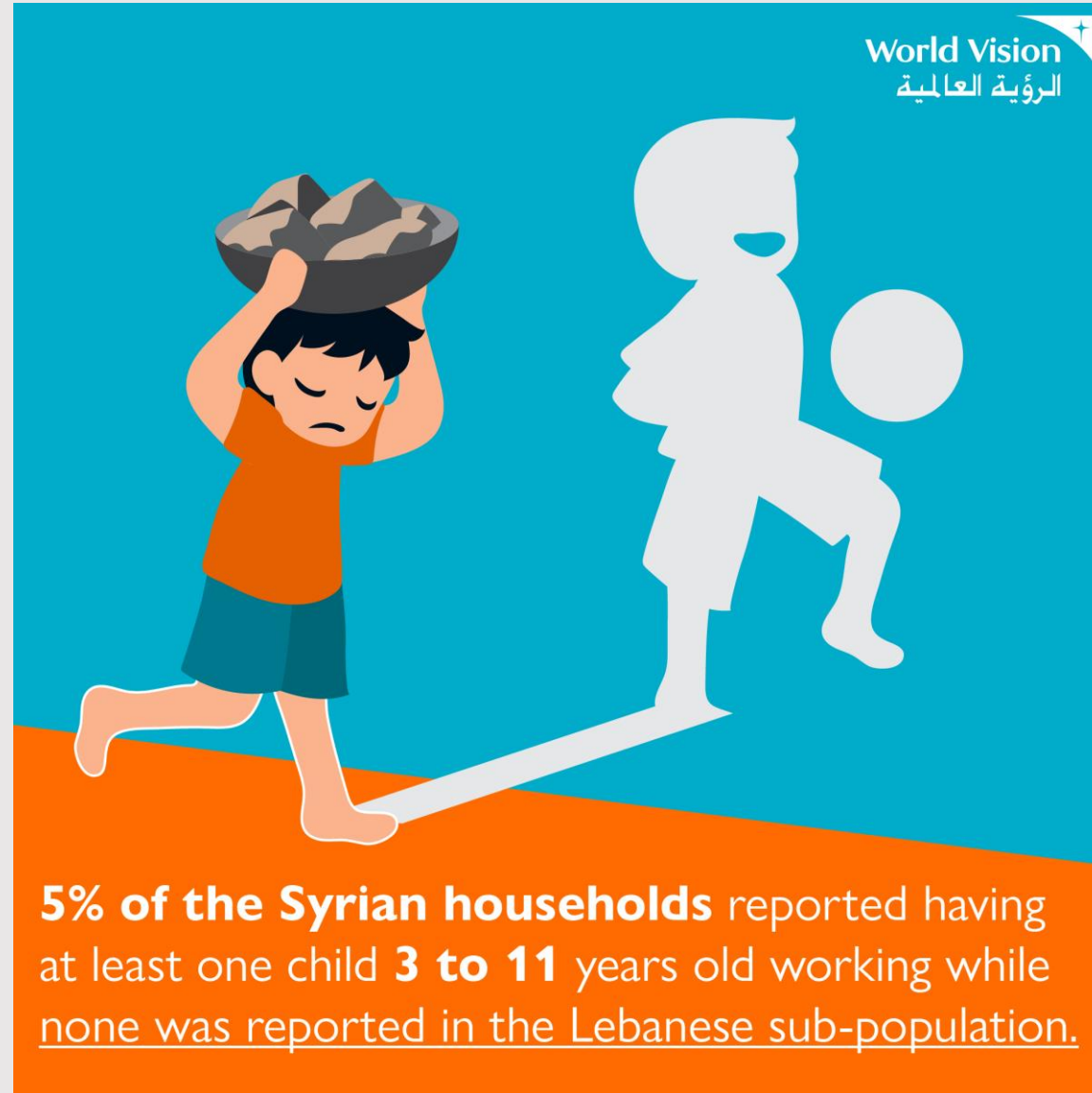
Findings

Inferential: Child Labour



Findings

Inferential: Child
Labour

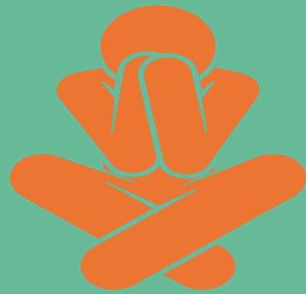




44%



think involving children in a paid job enhances their life skills



46%



think peer pressure increases the numbers of children involved in child labor



Parents' Perceptions



14.5%



child labor is an **accepted**
and **common** form of practice



35.1%



think it is **acceptable to work** if the
child is **above 14 years old**



Parents' Perceptions



37%



think **cultural beliefs** increase the numbers of children involved in child labor



34.8%



think a working child makes a **responsible adult**



Parents' Perceptions

Takeaway Findings

- Education and CL outcomes were non-binary: The study revealed that **19.9%** of the households had **idle children**.
- Perceptions surrounding **school enrolment** and **child labour** were more prominent predictors for the outcomes and play a bigger part among the **Syrian refugee population**.

Programmatic Recommendations

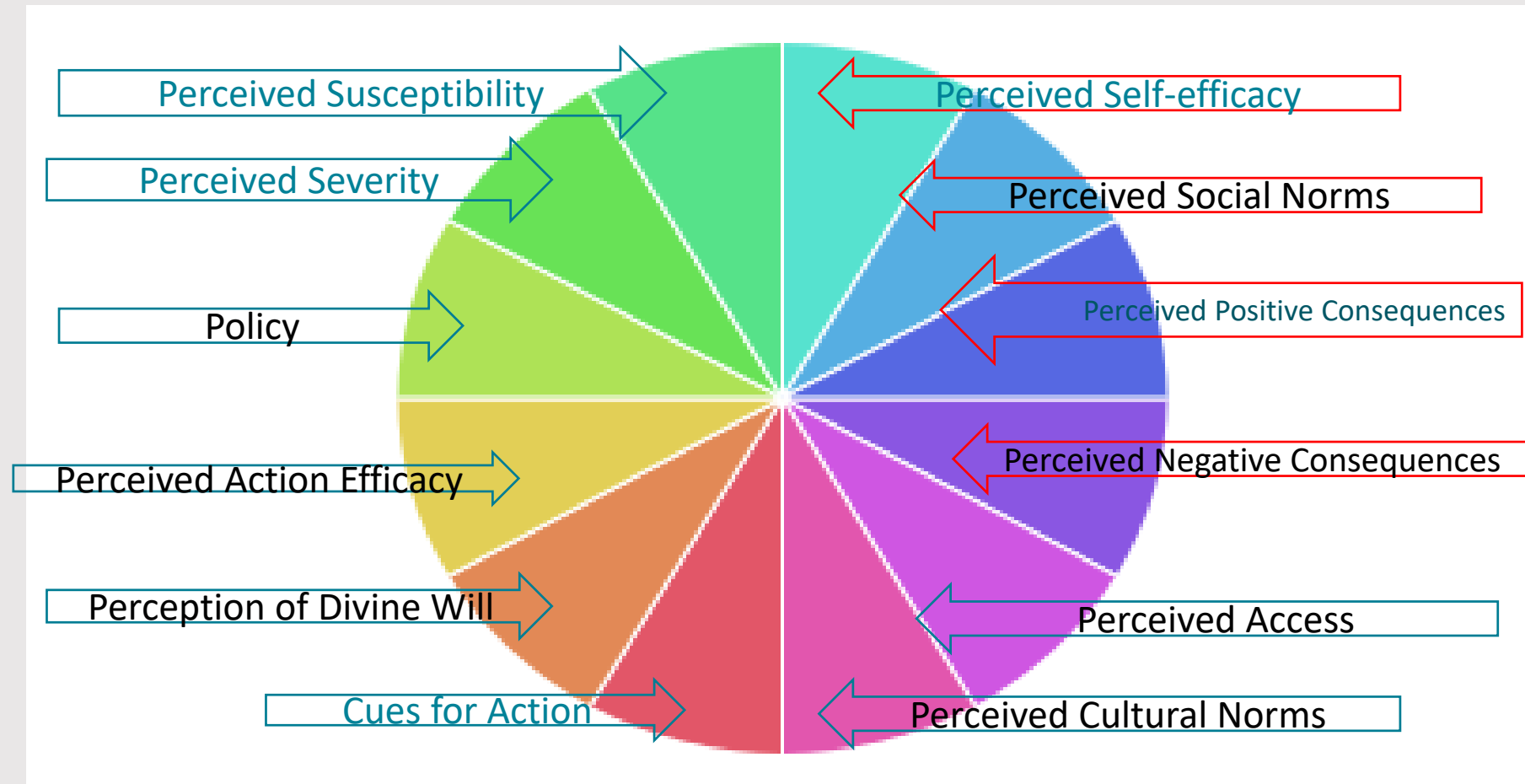
Need for a multi-sectoral approach to address Child Labor and school dropout as this problem reflects a grave concern for children's health, protection and development.

Need for Research: More in-depth studies exploring the behavioral determinants of child activity decision making.

Engagement donors to fund multi-sectoral and multi-year projects to respond to the current child labour and education needs.

What's Next?

WVL is conducting a barrier analysis study to identify doers and non-doers of the behavior “preventing children from being involved in child labour and retaining them in education” to map behavioral pathways.



Thank You

*Link to publication:

<https://www.wvi.org/publications/research/lebanon/caregiver-perceptions-and-their-influence-child-education-and-labour>