



# World Vision Central African Republic

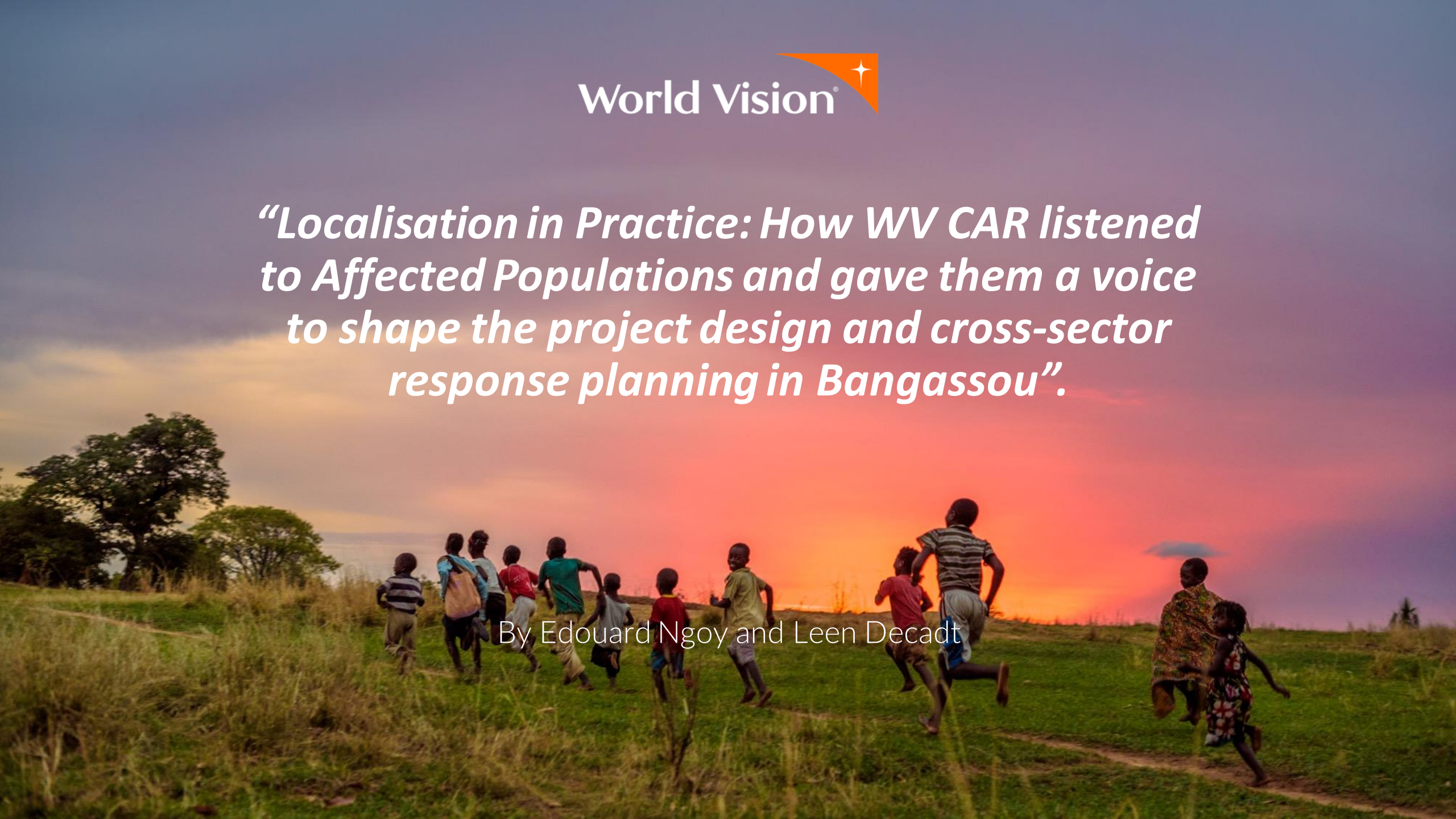
---

#AM2022 #CentralityofChildren #ChildProtection



*“Localisation in Practice: How WV CAR listened to Affected Populations and gave them a voice to shape the project design and cross-sector response planning in Bangassou”.*

By Edouard Ngoy and Leen Decadt



# Background

- Resilience of communities continues to erode under the weight of successive crises and economic recession.
- Almost the entire population has to adopt negative coping mechanisms.
- MVC and their families are often not heard about their issues of concern, root causes and priorities.

World Vision



# Background

- Lack of reliable data available on child protection, education and livelihoods issues in CAR.
- By engaging with the community and taking into account what their priorities are, there is an intentional shift of power to children and young people, their families and community actors.

World Vision



# RESEARCH

- WV CAR showed active commitment to take account of what the affected population identifies as priority for interventions and what is needed in terms of child protection, education and livelihoods services.
- Through an integrated, multi-sector qualitative assessment, young girls and boys (in and out-of-school), parents/caregivers and key informants from the community identified the most pressing matters during the crisis, the root causes, and the most urgent needs.



# Methodology

World Vision



- Giving a voice to Affected Populations, shaping the project design and cross-sector response planning.
- Integrated data collection tools were adapted from INEE Assessment Standards, CPMS, CHS (Core Hum. Standards) and other guidance to the context of Bangassou District.
- By developing and testing those tools, WV CAR created practical entry points for improving accountability to affected populations during the design and planning phases.
- The compilation of existing information on risk and access to child protection, education and livelihoods services provided a better understanding of the local context, and was triangulated with key findings from other assessments in CAR.

- The consolidated data analysis formed the foundation for a logical framework around CP, education and livelihoods objectives, targeting children and young people, parents and caregivers, and communities.
- Proposed interventions are derived from WVI's core project models in fragile contexts, aiming to match the needs of the populations in Bangassou.
- Currently, the log frame design is under review by the communities through a participatory review process.





- The focus of the qualitative data collection toolkit is to measure the level of well-being of most vulnerable girls and boys in Bangassou.
- Evidence from FGD and KII with boys and girls from different age groups and schooling, male and female parents and caregivers, teachers, and formal and informal community stakeholders has offered a comprehensive picture of the challenges faced by CAY.
- The purpose of this grassroots information is to feed into an impactful response, changing the lives of young boys and girls.

*"Life is not easy for us; most of the time our voices do not count"*

*"We don't sleep well, we have a problem with health, food and education"*  
(FGD adolescents)



*"Children don't know how to ask for help"*

*"All our materials have been looted and destroyed by the CPC armed groups. We have nothing at the moment"*

*"We have problems with resources; we did not cultivate last year"*

*(FGD parents and caregivers)*



# CHALLENGES

- The situation in CAR remains volatile. Situation reports continuously show that humanitarian needs are exceeding available human and financial resources.
- WV CAR's project in Bangassou can only contribute a fraction of what is required to offer a decent life to the affected populations.



## NEXT STEPS

- WV aims for a stronger focus on MVC in the hardest places.
- This requires a new, more coherent approach for fragile contexts, meeting immediate survival needs, while at the same time addressing the systemic root causes and drivers of conflict and vulnerability.
- The approach used by WV CAR emphasized child rights and integrated 3 sectors for improved child well-being of the population in Bangassou.
- At global level, WVI will further gather evidence of this inter-sectoral, participatory approach and develop an aligned assessment tool for other fragile countries to apply in future design processes.



Merci de nous écouter!

Thanks for listening!



**THE ALLIANCE**  
FOR CHILD PROTECTION  
IN HUMANITARIAN ACTION

#AM2022 #CentralityofChildren #ChildProtection



Edouard Ngoy, Operations Director WV CAR, [Edouard\\_ngoy@wvi.org](mailto:Edouard_ngoy@wvi.org);

Leen Decadt, Senior Technical Adviser Child Protection WVI, [leen\\_decadt@wvi.org](mailto:leen_decadt@wvi.org)