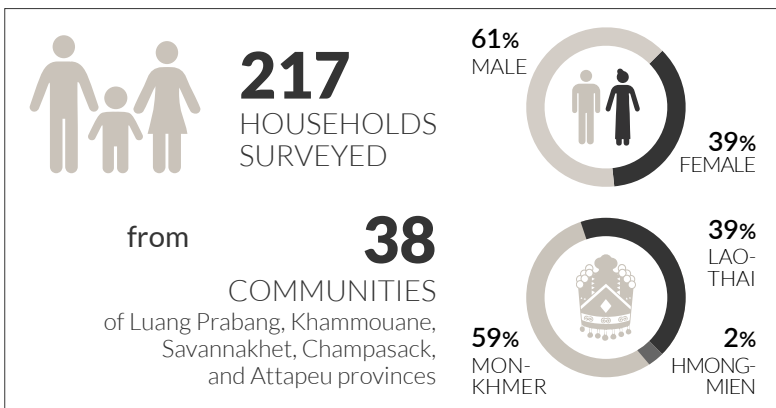


# INFOGRAPHICS

## The Impact of the Economic Crisis on Food Security of rural households in Lao PDR | March 2023

### BACKGROUND

Although employment had risen after the opening of the country in mid-2022, Laos' economy has faced challenges with inflation and KIP depreciation. Inflation has accelerated from 6.2% in January 2022 to 40.3% in January 2023, resulting in an increase in food and fuel prices surged by 45.8 percent and 50.4 percent respectively in December 2022. This has affected poor households and has pushed them into food insecurity and poverty. Two-thirds of households had reported spending less on health and education, which could have a long-term impact on human development.



World Vision International - Lao PDR has conducted a **Food Insecurity Experience Survey (FIES)** to understand the current situation of food insecurity in its target areas.

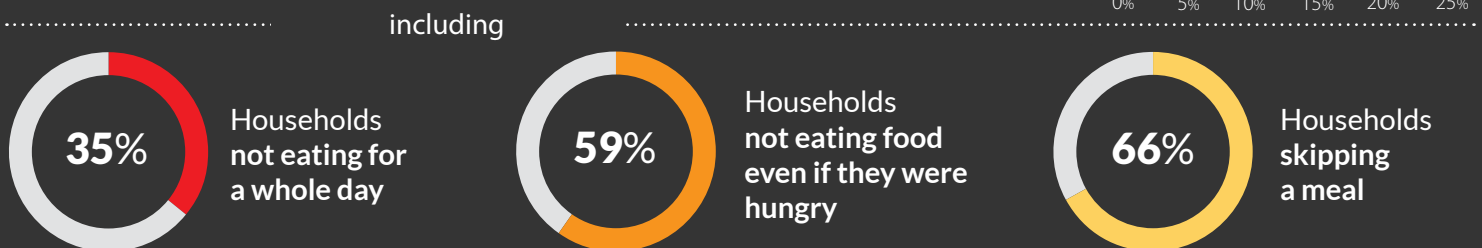
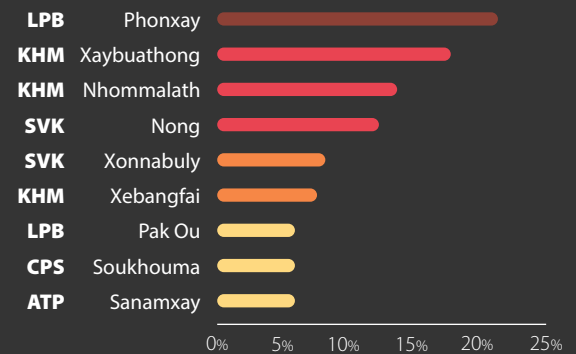
217 rural households from areas where World Vision operates have responded to the survey questionnaire, conducted in January, outside of the traditional "hungry months".

### FOOD INSECURITY EXPERIENCE SURVEY (FIES): KEY FINDINGS

#### Food insecurity metrics

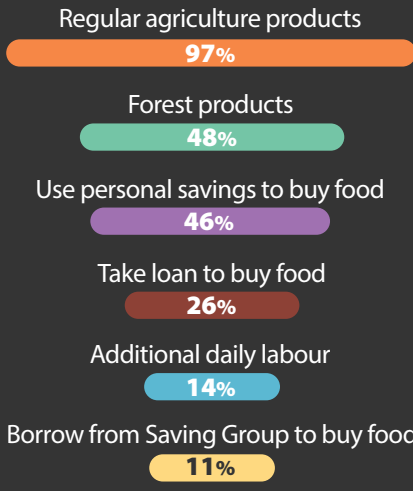


#### SEVERE FOOD INSECURITY GEOGRAPHICAL DISTRIBUTION



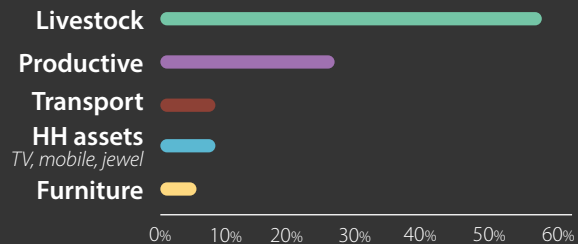
Coping mechanisms

HOW DID HOUSEHOLDS AFFORD FOOD?



**1 in 3** (33%)  
HOUSEHOLDS  
SELLING ASSETS

including\*



\*among 77 households selling assets



OUR WORK IN LAO PDR

World Vision supports the most vulnerable families through our project interventions. We operate in 23 districts of eight provinces. Some of the key activities we have carried out to support the families are:

- 1. Providing equipment and training on animal feeding for the families raise their animals.** Local solutions for animal feeding have been explored;
- 2. Train and support the families with seeds and tools for home gardening;**
- 3. Strengthening the saving groups** and enhancing the saving cultures so people can borrow money for critical needs.

