

LAKE CHAD BASIN CRISIS RESPONSE



I just visited the poorest part of the world...

This forgotten place is Diffa, in southeast Niger. For many years Niger has held the unfortunate distinction of being ranked bottom of the Human Development Index. Access to safe water and hygiene is scarce, contributing to high numbers of children who suffer or die from diarrhoea. Acute malnutrition levels among children hover around 15%, the emergency threshold set by the WHO. Poverty and cultural factors prevent large numbers of children from going to school. If things were already bleak what would the situation be two days' travel east in the poorest region in the country? The fact is, poverty was to be seen everywhere in Diffa.

The Diffa region borders northern Nigeria from which many tens of thousands of people have fled the extremist ideology and violence of Boko Haram. Insurgency and violence has also bled across the porous border itself resulting in internal displacement within Niger. The refugees and displaced - mainly women and young children - have often fled multiple times, each time leaving behind more and more of their meagre belongings. ►►►

▶▶▶ Today in Diffa close to half of the current population is displaced, either from within Niger or from Nigeria. Some are grouped in camps; most have been taken in by host families. Although poor themselves they are sharing what little they have with these displaced strangers, pushing their own families further into vulnerability.

World Vision Niger did not initially have programmes in Diffa, but the worsening humanitarian situation led us respond in early 2016. I visited a distribution of non food items, seeing mothers gladly carry off a jerry can with which to transport water, a simple mat to sit on, a bed net to sleep under, some bars of soap and other useful things. Things I thought of as 'little' meant a lot to these refugees having lost all they once owned.

I came across a little boy happily and loudly singing "A, B, C, D, E, F, G..." and when I arrived in the child friendly space I understood where he had learnt his song: World Vision had set up this space and taught some women and men to provide educational and recreational activities to children, which they now faithfully do every day. Hundreds of children enjoyed escaping the boredom of a desert camp, overcoming emotional distress and learning skills that will help rebuild their lives.

An elderly man thanked me for the work done by World Vision: "They have helped us so much. We here call them 'the people of Word'. Others have come to see and make promises, but World Vision has done everything they have promised to do."

The displaced would like more boreholes and taps and child friendly spaces. World Vision has committed to increase its response in this part of the world. But there

is a big challenge: the world's attention is on other parts of the world and support for a response in this forgotten corner is difficult to find. Who would bother to look at the bottom of the long list of nations in need to find Niger? Who would speak out for those hidden away behind desert dunes and forgotten by our global media? Who would free up funds for such a far away and complex emergency when there are other needs much easier to cater for?

Well, the problem is, we are not anyone. We are World Vision! And we have signed up to care for children living in areas of high fragility and vulnerability. I believe you can't get closer to targeting the most vulnerable children than by responding to this crisis in the poorest part of the world.

Our team in Niger is sacrificially doing what they can. There is some initial support being put in place. But honestly, we are nowhere close to the mobilisation of interest, intercession, engagement, giving, or going... which would be the appropriate response given the needs, the opportunities to make a difference and the strategic commitment of World Vision to areas of high vulnerability. Are we really 'people of the Word' directing our efforts and funds to where our strategic commitment is?

Jesus once reminded us: 'What you have (not) done to one of these least ones, you have (not) done to me.' Please would you help the 'least ones' who are closest to Christ's heart

Esther Lehmann-Sow
Regional Leader



GOAL:

To meet immediate survival needs and increase resilience of displaced children and their families and host communities across Niger and Chad.

WorldVision
LAKE CHAD BASIN CRISIS
RESPONSE

november 2016 - <http://www.wvi.org/lake-chad-response>

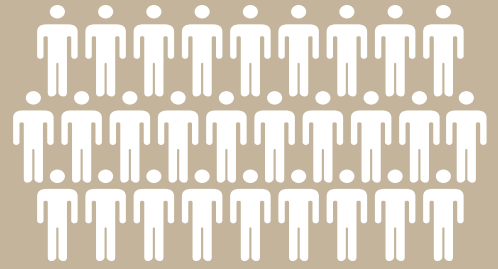
CONTEXT

4 countries affected

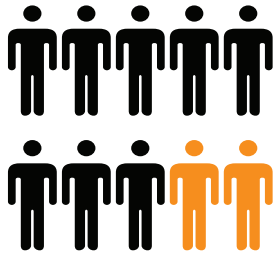
9.2

MILLION

people in need of humanitarian assistance



8 OUT OF 10



DISPLACED IN CHAD are hosted by communities considered among the most vulnerable in the world



1.4

MILLION

children displaced

2.2

MILLION

people trapped in hard to reach places

6.3

MILLION



PEOPLE IN CONFLICT AFFECTED REGION FOOD INSECURE

475,000

CHILDREN WILL SUFFER SEVERE MALNUTRITION

THIS YEAR ALONE



UP FROM

175,000

AT THE START OF THE YEAR

GLOBAL ACUTE MALNUTRITION RATES

17%

EXCEEDING EMERGENCY THRESHOLD

CHILDREN IN HARD-TO-REACH-AREAS

1

MILLION



86

CHILDREN USED AS SUICIDE BOMBERS (SINCE 2014)



38

THIS YEAR ALONE



OCHA

United Nations
Office for the Coordination
of Humanitarian Affairs

REVISED UN APPEAL (SEPTEMBER 2016)



559

MILLION

UNTIL END OF THE YEAR

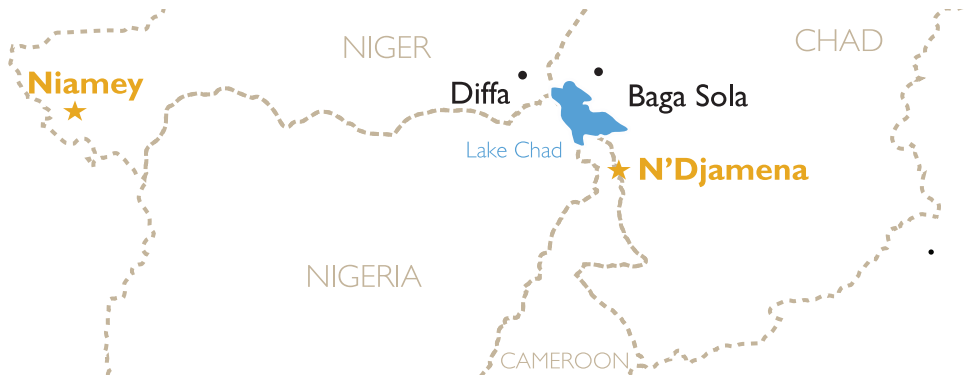
WorldVision
LAKE CHAD BASIN CRISIS
RESPONSE

november 2016 - <http://www.wvi.org/lake-chad-response>

CALL FOR ACTION

Seeing the deteriorating situation World Vision is elevating its response to the crisis and moving to new areas in Western Chad, Baga Sola and scaling up operations in East Niger, Diffa region.

World Vision has worked to meet the needs of children in Chad for the last 30 years.



The multi country responses will be a child-focused disaster response with the initial focus on:



World Vision will respond to the needs of 300,000 of the most vulnerable people in Niger (195,000) and Chad (105,000).

World Vision initially seeks

USD **10** MILLION

for 3-6 months

RESPONSE TO THE NEEDS OF THE AFFECTED CHILDREN AND THEIR FAMILIES

The infographic features a central orange circle with the text 'USD 10 MILLION' and a smaller black circle below it with 'for 3-6 months'. To the left, there are illustrations of armed men and a damaged house. To the right, there are illustrations of a family and two hands holding each other. The entire graphic is framed by a black border with orange arrows on the left side.

NUMBERS DON'T LIE. THE SITUATION IS GETTING WORSE!

World Vision
LAKE CHAD BASIN CRISIS
RESPONSE

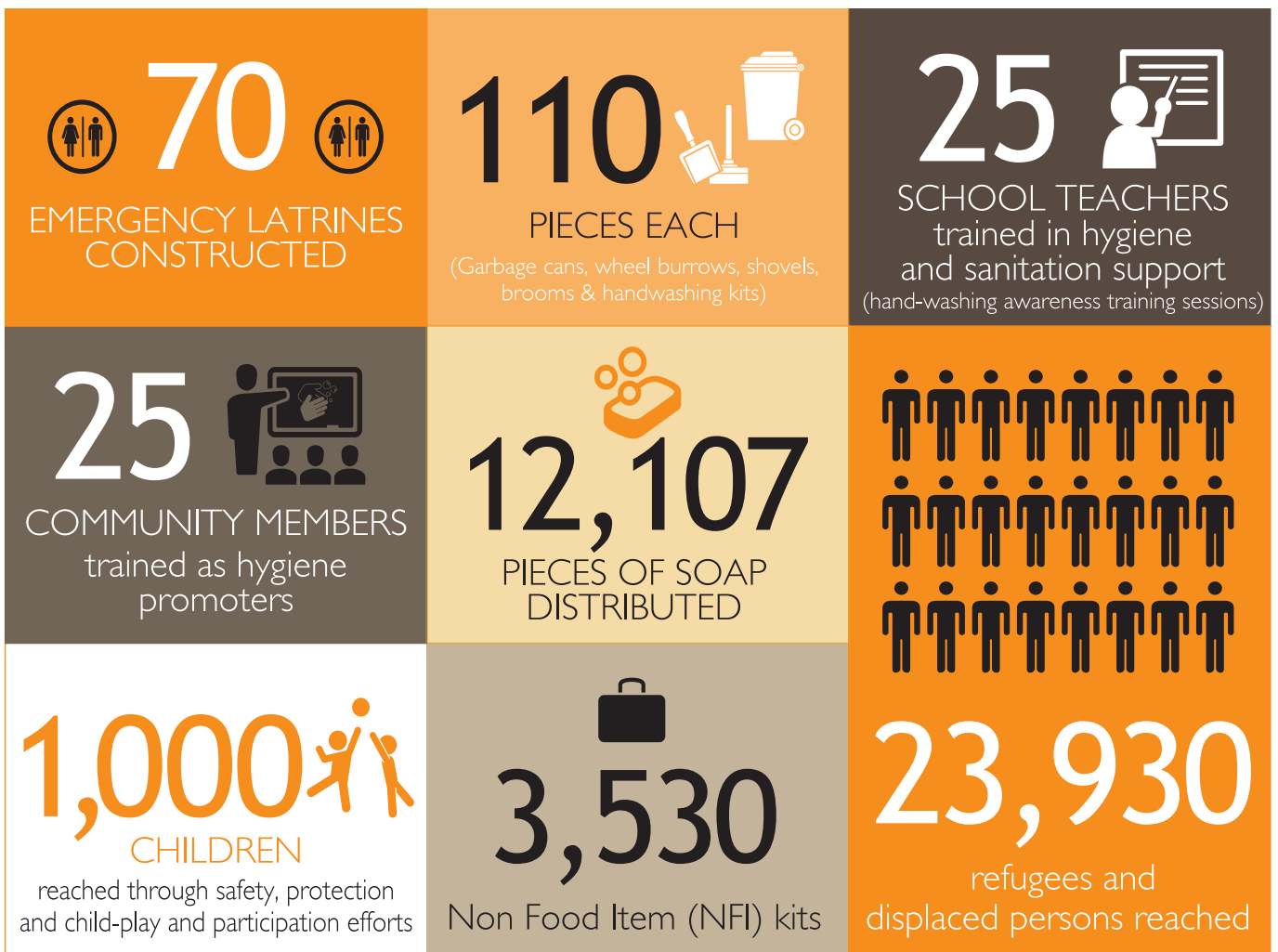
november 2016 - <http://www.wvi.org/lake-chad-response>



DIFFA, NIGER

World Vision has been intervening for the past year. In partnership with the government, UN agencies, NGOs and donors, World Vision has provided access to water, run child friendly and safety programmes, supported sanitation and hygiene efforts as well as provided survival kits containing blankets, mosquito nets, jerry cans, kettles, chargeable lights, water troughs, mats and some medical supplies. World Vision now aims to respond to the needs of adolescents, women and host communities strengthening the community spirit and their ability to look after themselves, including by supporting economic development activities.

RECENT HIGHLIGHTS



World Vision
LAKE CHAD BASIN CRISIS
RESPONSE

november 2016 - <http://www.wvi.org/lake-chad-response>